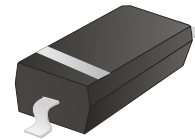


ACZRW4697-G

RoHS Device



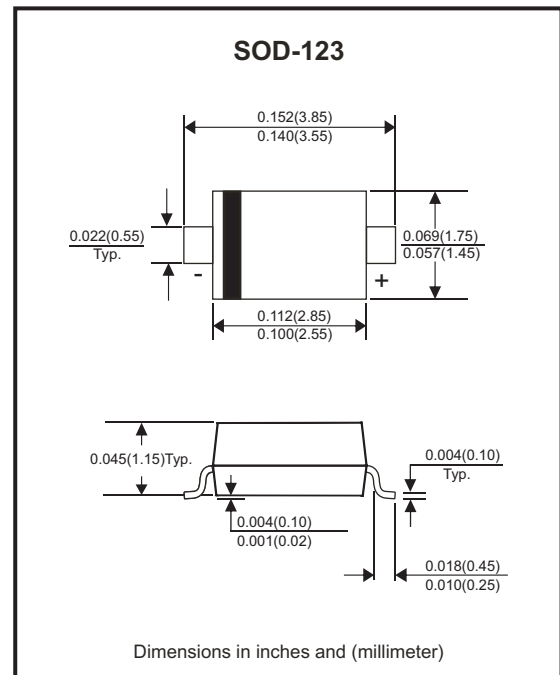
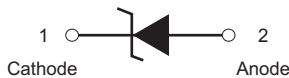
Features

- Planar die construction.
- Ideally suited for automated assembly processes.
- Comply with AEC-Q101

Mechanical data

- Case: Molded plastic, SOD-123
- Mounting position: Any

Circuit diagram



Maximum Ratings (TA=25°C unless otherwise noted)

| Parameter | Symbol | Value | Unit |
|---|--------|-------------|------|
| Forward voltage at IF=10mA | VF | 0.95 | V |
| Power dissipation | PD | 500 | mW |
| Thermal resistance, junction to ambient air | RθJA | 340 | °C/W |
| Junction temperature range | TJ | 150 | °C |
| Storage temperature range | TSTG | -55 to +150 | °C |

Electrical Characteristics (TA=25°C unless otherwise noted)

| Part Number | Zener Voltage | | | Leakage Current | | Marking Code | |
|-------------|---------------|--------|--------|-----------------|---------|--------------|-----|
| | VZT | | | @ IZT | IR @ VR | | |
| | Nom(V) | Min(V) | Max(V) | (μA) | (μA) | | (V) |
| ACZRW4697-G | 10 | 9.5 | 10.5 | 50 | 1 | 7.6 | DE |

Company reserves the right to improve product design, functions and reliability without notice.

REV: A

TYPICAL RATING AND CHARACTERISTIC CURVES (ACZRW4697-G)

Fig.1 - Temperature Coefficients

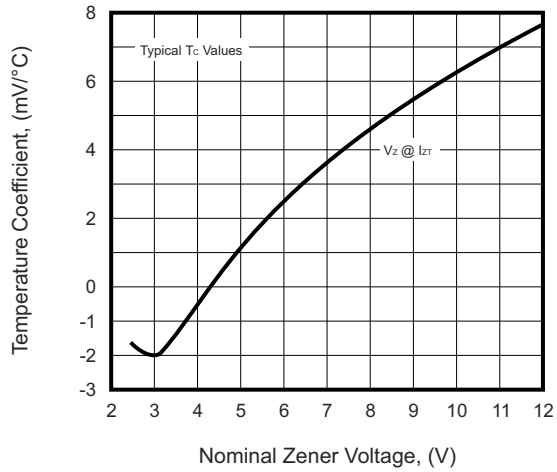


Fig.2 - Temperature Coefficients

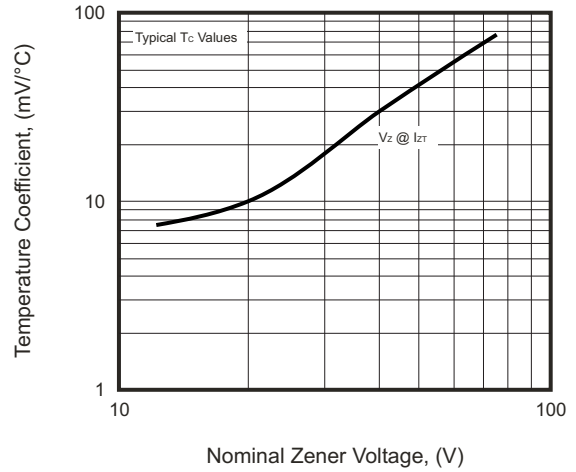


Fig.3 - Steady State Power Derating

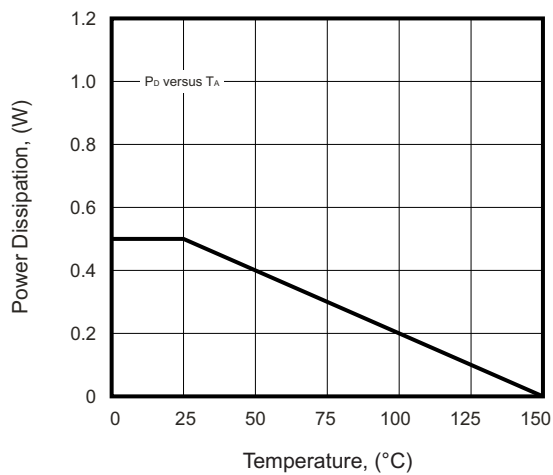
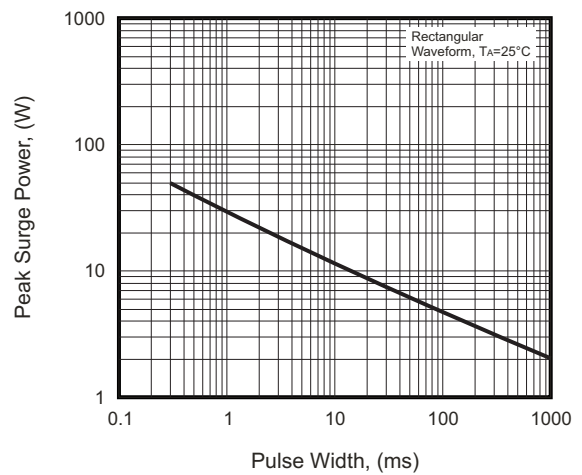
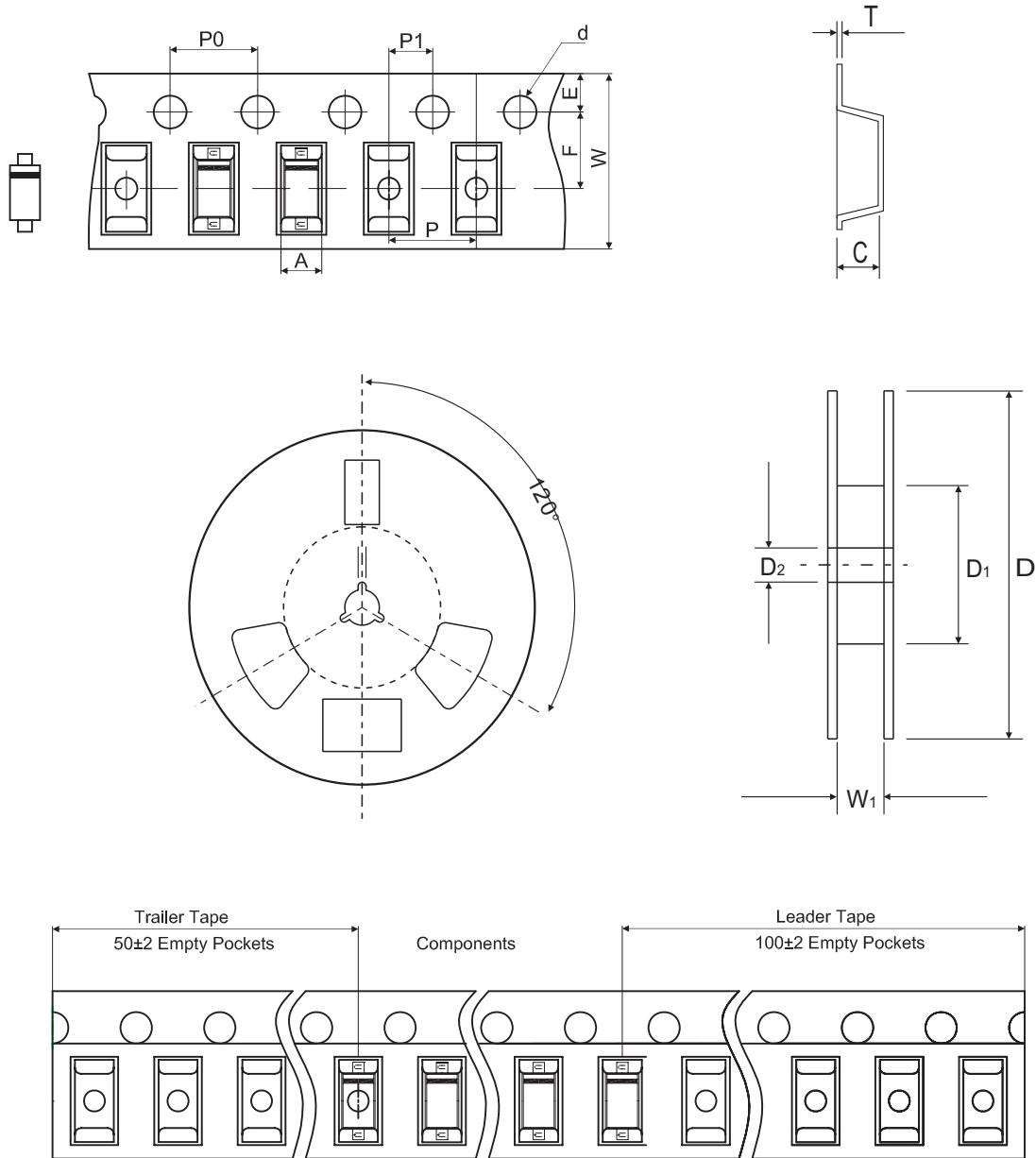


Fig.4 - Max. Non-repetitive Surge Power



Reel Taping Specification



| SOD-123 | SYMBOL | A | B | C | d | D | D1 | D2 |
|---------|--------|---------------|---------------|---------------|---------------|---------------|---------------|---------------|
| | (mm) | 1.85 ± 0.10 | 3.94 ± 0.10 | 1.57 ± 0.10 | 1.55 + 0.05 | 178 ± 1.00 | 54.0 ± 0.50 | 13.0 ± 0.50 |
| | (inch) | 0.073 ± 0.004 | 0.155 ± 0.004 | 0.062 ± 0.004 | 0.061 + 0.002 | 7.008 ± 0.039 | 2.126 ± 0.020 | 0.512 ± 0.020 |

| SOD-123 | SYMBOL | E | F | P | P0 | P1 | W | W1 |
|---------|--------|---------------|---------------|---------------|---------------|---------------|--------------------|---------------|
| | (mm) | 1.75 ± 0.10 | 3.50 ± 0.05 | 4.00 ± 0.10 | 4.00 ± 0.10 | 2.00 ± 0.05 | 8.00+0.20/-0.10 | 9.50 ± 1.00 |
| | (inch) | 0.069 ± 0.004 | 0.138 ± 0.002 | 0.158 ± 0.004 | 0.158 ± 0.004 | 0.079 ± 0.002 | 0.315+0.008/-0.004 | 0.374 ± 0.039 |

Company reserves the right to improve product design, functions and reliability without notice.

REV: A

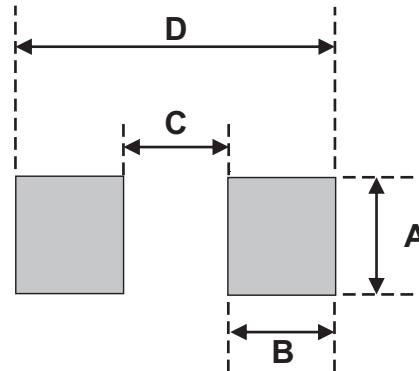
Marking Code

| Part Number | Marking Code |
|-------------|--------------|
| ACZRW4697-G | DE |



Suggested PAD Layout

| SIZE | SOD-123 | |
|------|---------|--------|
| | (mm) | (inch) |
| A | 1.22 | 0.048 |
| B | 0.91 | 0.036 |
| C | 2.36 | 0.093 |
| D | 4.19 | 0.165 |



Note:

1. The pad layout is for reference purposes only.

Standard Packaging

| Case Type | REEL PACK | |
|-----------|-----------------|---------------------|
| | REEL (pcs) | Reel Size (inch) |
| SOD-123 | 3,000 | 7 |